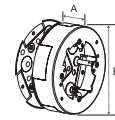
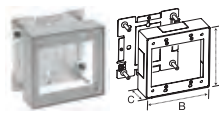
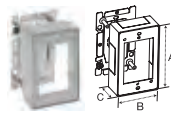
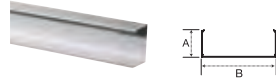


# Aluminum Raceway HBLALU2000 Series

Aluminum Raceway, Device Boxes, Elbows and Tees



HBLALU2000 Series	Description	Material	Catalog Number	Description	Material	Catalog Number
	<b>5 Ft. Base</b> Satin anodized finish. Packed 60 ft. (18.3m) per carton, 5 ft. (1.5m) lengths.	Anodized Aluminum	<b>HBLALU2000B5</b>	A: .82" (21.00) B: 1.84" (46.74)	<b>Cover</b> Satin anodized finish. Packed 60 ft. (18.3m) per carton, 5 ft. (1.5m) lengths.	Anodized Aluminum
<b>10 Ft. Base</b> Satin anodized finish. Packed 60 ft. (18.3m) per carton, 10 ft. (3m) lengths.  Assembled cover and base dimensions. W: 1.84" (46.74) H: .91" (23.11)	Anodized Aluminum	<b>HBLALU2000B10</b>	A: .82" (21.00) B: 1.84" (46.74)			



Standard	Description	Material	1-Gang	2-Gang	Description	Material	Round Box
	<b>Device Box</b> For standard switches and receptacles.	Anodized Aluminum	<b>HBLALU2047</b>	A: 4.54" (115.32) B: 2.82" (71.63) C: 1.38" (35.05)	<b>HBLALU20472</b>	A: 4.54" (115.32) B: 4.64" (117.86) C: 1.38" (35.05)	Anodized Aluminum
<b>Deep</b> For deep switches and receptacles.	Anodized Aluminum	<b>HBLALU2044</b>	A: 4.54" (115.32) B: 2.82" (71.63) C: 2.25" (57.15)	<b>HBLALU20442</b>	A: 4.54" (115.32) B: 4.64" (117.86) C: 2.75" (69.85)		

Base Trade Size KOs  
 1 - 1/2", 3/4" Concentric 1 - 1/2"  
 1 - Rectangular 1 - Rectangular

Elbows and Tees	Description	Material	Catalog Number	Description	Material	Catalog Number
	<b>Internal Elbow</b> For making a 90° internal turn in a raceway run.	Anodized Aluminum	<b>HBLALU2017*</b>	A: 3.00" (76.20) B: 3.00" (76.20)	<b>External Elbow</b> For making a 90° external turn in a raceway run.	Anodized Aluminum
<b>Flat Elbow</b> For making a 90° flat turn in a raceway run.	Anodized Aluminum	<b>HBLALU2011*</b>	A: 3.00" (76.20) B: 3.00" (76.20)			
Elbows and Tees	<b>Tee Fitting</b> For branch connections of right angles.	Anodized Aluminum	<b>HBLALU2015*</b> A: 4.00" (101.60) B: 3.40" (86.36)		Anodized Aluminum	<b>HBLALU2015*</b> A: 4.00" (101.60) B: 3.40" (86.36)

Note: \*HBLALU2001 couplings included.

Dimensions in Inches (mm)